

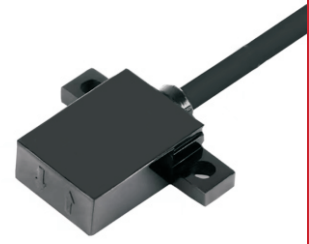
# MUJIE 慕杰®

YOUR AUTOMATION, YOUR MUJIE!

超小体积，适用于各种狭窄空间的安装，灵敏度高，可检测发射频率低的暗色物体

微型光电传感器MUE-DW/DL系列  
Micro photoelectric sensor mue-DW/DL series

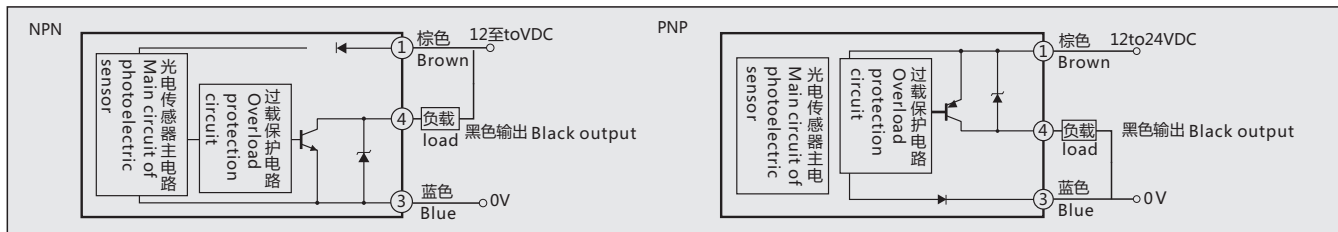
Ultra small size, suitable for installation in various narrow spaces, high sensitivity, can detect dark objects with low emission frequency



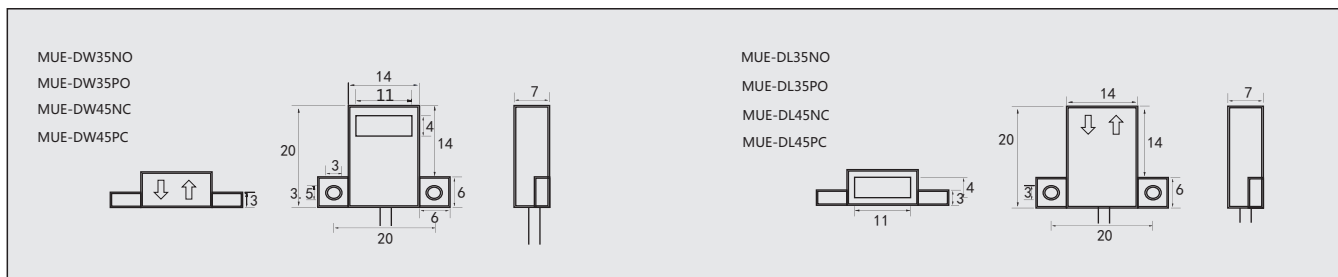
## ► 技术规格 Specification

型号 type	NPN	MUE-DW35NO	MUE-DL35NO	MUE-DW45NC	MUE-DL45NC
	PNP	MUE-DW35PO	MUE-DL35PO	MUE-DW45PC	MUE-DL45PC
检测面 Detection surface	卧式 horizontal		立式 vertical	卧式 horizontal	立式 vertical
输出方式 Output Mode	入光时ON On at light input			ON	
接线方式 Connection Mode	线缆型 Cable type				
检测距离 Detection Distance	白纸5mm(黑色物体3mm) White paper 5mm (black object 3mm)				
检测物体 Detect objects	直径1mm 铜线(设定距离5mm) 1mm diameter copper wire (set distance 5mm)				
应差 Job assignment	使用白光泽纸 (15*15mm 工作距离的20%以下) Use white glossy paper (less than 20% of the working distance of 15*15mm)				
光源 light source	红外线LED (投光波峰波长: 880nm,调制式) Infrared LED (projection peak wavelength: 880nm, modulated)				
反应时间 Reaction Time	0.8ms以下 Less than 0.8ms				
电源电压 Supply Voltage	DC12-24V				
重复精度 Repetition precision	0.08mm以下 Below 0.08mm				
检测距离 Detection Distance	白纸5mm(黑色物体3mm) White paper 5mm (black object 3mm)				
控制输出 Control output	开关容量 Switch capacity	3-100mA			
	残留电压 Residual voltage	3V以下(负载电流100mA, 导线长2m时) Below 3V (load current 100mA, wire length 2m)			
显示灯 Display Lights	动作显示灯(红色) Action Indicator Light (red)				
保护回路 Protection Circuit	浪涌保护回路, 短路保护, 极性反接保护 Surge Protection Circuit, short circuit protection, polarity reverse connection protection				
环境温度 Ambient temperature	动作时: -10~+55°C(无结冰, 无结露) 保存时: -25~85°C(无结冰, 无结露) During operation: -10~+55 °C (no ice or condensation) during storage: -25~85 °C (no ice or condensation)				
环境光度 Ambient luminosity	受光面照度3500Lx以下 Illuminance of the light receiving surface is below 3500lx				
温度的影响 The effect of temperature	温度范围-10~50°C, 每变化20°C时, 检测距离±10%以内变化 The temperature range is from -10 °C to 50 °C, and the detection distance is less than ± 10% for each change of 20 °C				
电压的影响 Voltage effect	额定电源电压范围±15%以内波动时, 检测距离±1%以内变化 When the rated power supply voltage fluctuates within ± 15%, the detection distance varies within ± 1%				
绝缘阻抗 Insulation impedance	500MΩ以上(DC500兆欧表) 充电部与外壳之间 Between the charging part and the housing above 500m Ω (dc500 megger)				
耐电压 Withstand voltage	AC1000V50/60Hz 1min 充电部与外壳间 Ac1000v50/60hz 1min between charging part and housing				
振动(耐久) Vibration (durability)	10~55Hz, 1.5mm双振幅, 在X,Y,Z方向各2小时 10~55Hz, 1.5mm double vibration amplitude, 2 hours in X, y and Z directions respectively				
冲击(耐久) Impact (durability)	500m/s <sup>2</sup> , X,Y,Z轴方向各10次 500m/s <sup>2</sup> , 10 times in X, y and Z directions respectively				
连接方式 Connection mode	导出引出型(标准导线长2m) Lead out type (length of standard cone wire is 2m)				
外壳材质 Shell material	PC				

## ► 接线图 Wiring diagram



## ► 安装尺寸图 Mounting Dimensions(单位Unit:mm)



编码器/磁栅尺  
Encoder/Magnetic Scale

位移/倾角/计数器  
Displacement /Inclination /Counter

接近/加速度/温度  
Proximity/Acceleration/Temperature

光电/超声波/区域  
Photoelectric/Ultrasonic/Area

压力/称重  
Pressure / load cell

联轴器/附件  
Couplings/Accessories