

MUJIE 慕杰®

YOUR AUTOMATION.YOUR MUJIE!

轴套采用高强度铝合金
专为编码器设计
柔性好，不易扭断
弹性体采用聚氨酯材质，耐油，抗氧化

Bushings made of High-strength aluminum alloy
Design for encoder
The good Softness,It is not easy to break
Elastomer made of TPU,Anti-oil,Anti-oxidation



八字型联轴器MB系列 Series MB coupling

► 型号说明 Model Explanation

MB	-15	X31	-6	x6	□
基本型号 Model M:常规增量型 Incremental encoder M□:特殊型号定义 Special definition	外径 Diameter	长度 Lenght	d1轴径 d1Bore	d2轴径 d2Bore	客户定制 customization

说明:如果需要另加键槽,则以非标形式定做,请在型号轴径尺寸后加K Note: if additional keyway is required, it can be customized in non-standard form.
例:MB-15x24-6Kx6K 则表示两内孔都开键槽。Please add k after the model shaft diameter. Example: mb-15x24-6kx6k

► 外形尺寸表 Exterior dimension drawing

Units 单位:mm

产品型号 Product model	常用d1/d2内径尺寸 Common D1 / D2 inner diameter size	ΦD	L	LP	S	F	M	拧紧扭矩 (n.m)
MB-15x31	4-4.6-6	15	31	20	1.8	2.5	M3	0.7
MB-19x35	4-4.6-6.8-8.10-10	19	35	21	1.8	3.5	M4	1.7
MB-25x45	6-6.35-7-8-9-10-12-14-15	25	45	39	1.8	3.8	M4	1.7
MB-25x56	6-6.35-7-8-9-10-12-14-15	25	56	39	1.8	3.8	M4	1.7

备注:联轴器两端内孔由至小和至大内径自由组合,内孔使用H7标准公差加工,表内所标记内径尺寸只供参考,客户所需孔径,请联系业务员或其他相关技术人员咨询详细参数。
Remarks: the inner diameter of the inner holes at both ends of the coupling can be freely combined from the smallest to the largest. The inner holes are processed with H7 standard tolerance. The inner diameter dimensions marked in the table are for reference only. Please contact the salesman or other relevant technicians for details.

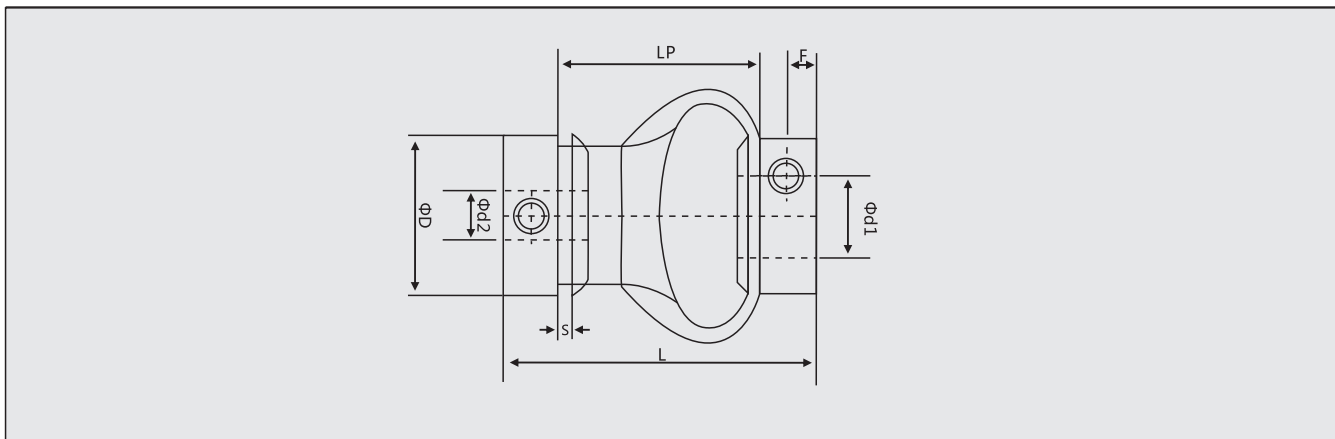
► 技术参数表 Technical parameter table

Units 单位:mm

产品型号 Product model	额定扭矩 (N.m)	容许偏心 (mm)	容许偏角 (°)	容许轴向偏差 (mm)	容许转速 (RPM)	静态扭转刚度 (N.m/rad)	惯性矩 (N.m)	轴套材质	主体材质	表面处理	联轴器重量 (g)
MB-15x31	0.5	1	2	±2-5	8000	15	4.5×10^{-4}	高强度铝合金 High strength aluminum alloy	聚氨酯 polyurethane	表面阳极氧化 Surface anodizing	14.7
MB-19x35	0.8	1	2	±2-5	6000	5.6×10^{-4}	14.7				
MB-25x45	1.0	1	2	±2-5	5000	7.0×10^{-4}	34				
MB-25x56	1.0	1	2	±2-5	5000	7.0×10^{-4}	34				

备注:以上惯性力矩和各项技术参数由至大孔径为标准所测的数据,至大额定扭矩值跟联轴器自身的持久性有关联,外径越大受力越大,外径越小容许转速越高。
Remarks: the above inertia moment and various technical parameters are measured according to the large aperture. The large rated torque value is related to the durability of the coupling itself. The larger the outer diameter, the greater the stress, and the smaller the outer diameter, the higher the allowable speed.

► 安装尺寸图 Mounting Dimensions(单位Unit:mm)



编码器/磁栅尺
Encoder/Magnetic Scale

位移/倾角/计数器
Displacement/Inclination/Counter

接近加速度/温度
Proximity/Acceleration/Temperature

光电/超声波/区域
Photoelectric/Ultrasonic/Area

压力/称重
Pressure / load cell

联轴器/附件
Couplings/Accessories